

CERTIFICATE OF LOCATION OF GOVERNMENT CORNER

NORTH QUARTER _____ Corner of Section 13 , Township 107N , Range 39W

5th Principal Meridian, State of Minnesota, County of MURRAY

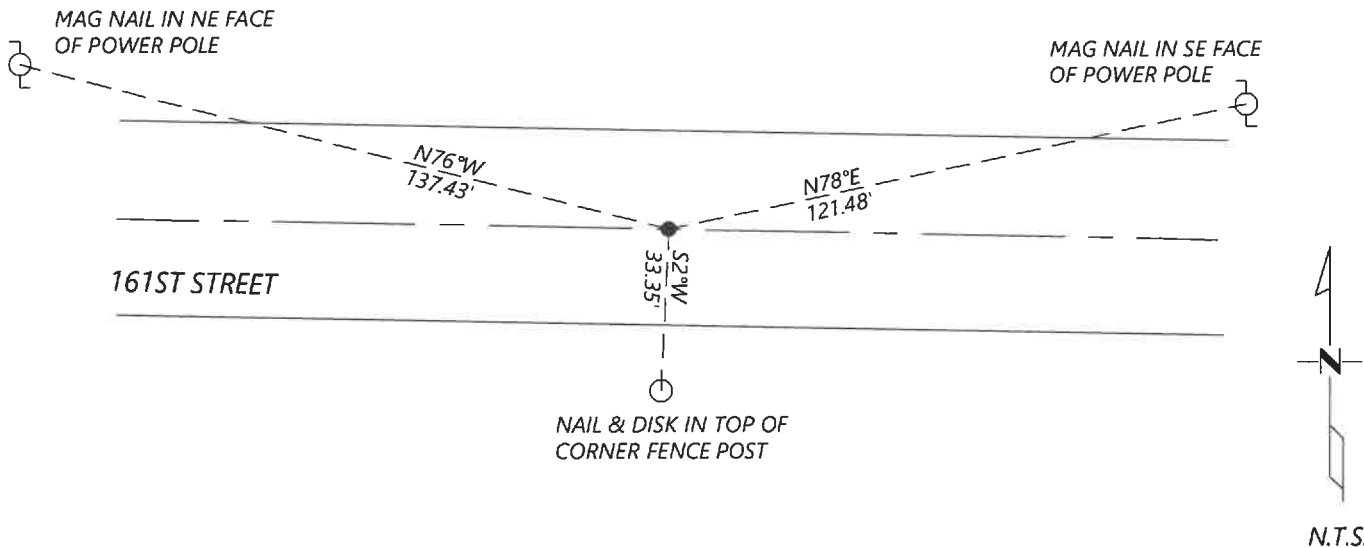
At the corner location shown on the sketch:

On 8/27/2020 found a NO. 4 REBAR WITHOUT CAP, DOWN 0.7FT
DATE

left monument as found lowered monument removed monument (explain)

On _____ placed a _____
DATE

SKETCH OF REFERENCE TIES



Statement of evidence for this corner location is on back of this page.

I hereby certify that this document was researched and prepared by me or under my direct supervision and that I am a licensed Land Surveyor under the laws of the State of Minnesota.

Signature [Handwritten Signature]

Date 6/16/2021 License No. 45874

Title:

- Land Surveyor Professional Engineer
 County Surveyor County Engineer

OFFICE OF THE COUNTY RECORDER

County of Murray

I hereby certify that this document was filed in the Co.

Recorder's office at _____ M. on the _____ day of _____ A.D. 20 _____

County Recorder Karen Brown
 by JUN 22 2021, Deputy

DOCUMENT NO. _____

JASON LATZKE
Minnesota License No. 45874

Statement of Evidence:

North Quarter Corner of Section 13, Township 107 North, Range 39 West, 5th Principal Meridian, Murray County, Minnesota.

1861 July, Set post in mound.

1954 A survey record for Section 13 shows an iron stake in center of grade.

2011 August, A survey in Section 12 by Perry Zieske shows a found iron monument at the corner. He shows a distance of 2649.89ft to the Southeast corner of Section 12.

2020 September, Westwood Professional Services searched and found a No. 4 rebar. The position fits the 2011 Zieske survey well and accepted as the corner.

Analysis of the recovered data, field evidence and survey measurements, indicates that the monument found is the correct perpetuation of this corner. For additional information concerning this corner please contact Westwood Professional Services.